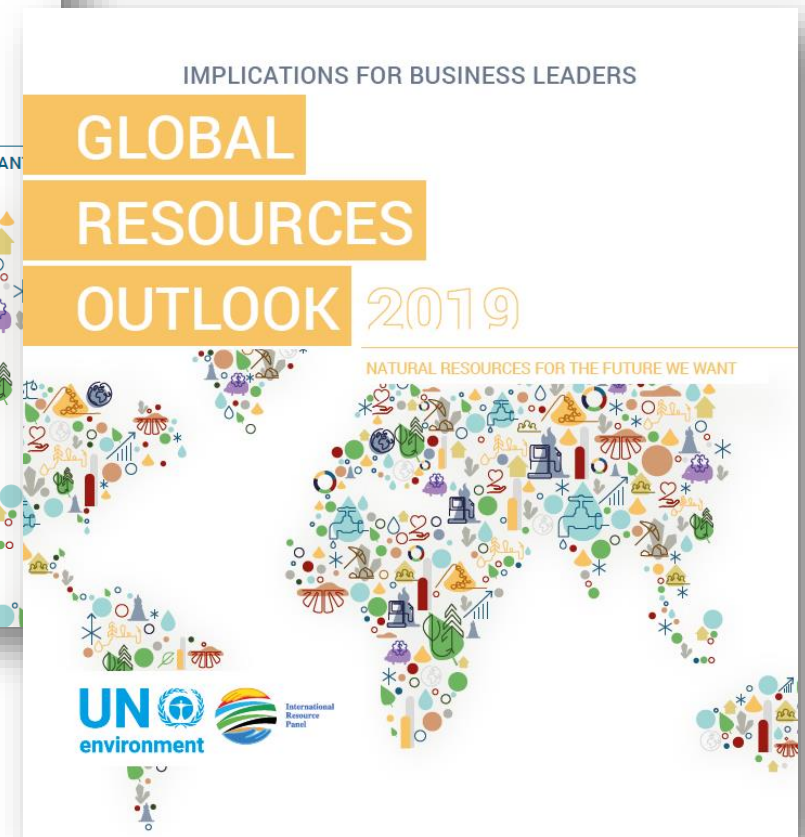
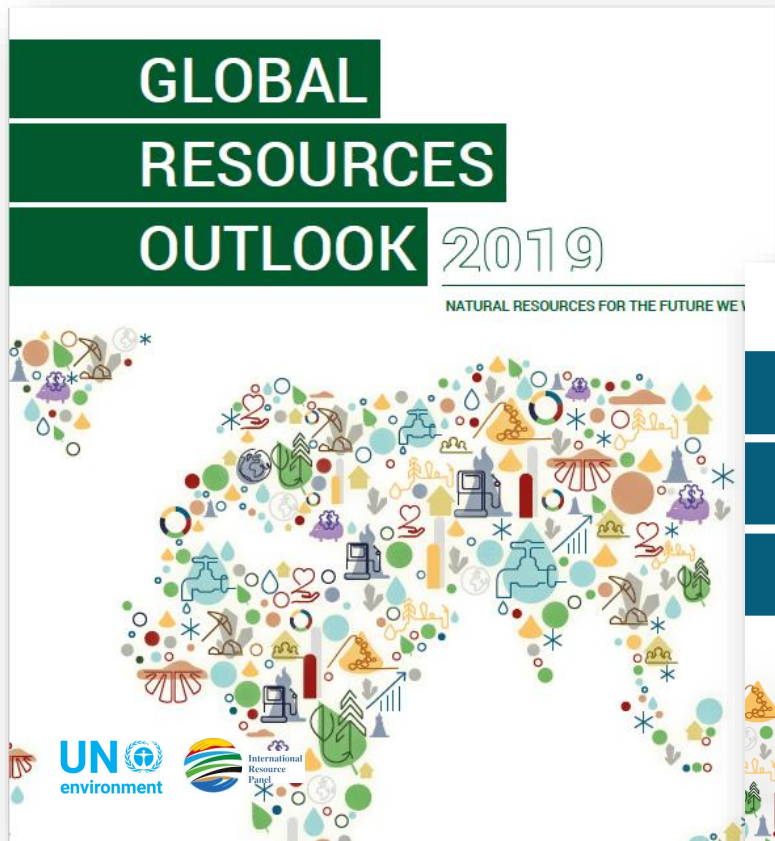


**Report launched 12th March
2019**

#GRO2019

#GROBusiness

@UNEPIRP



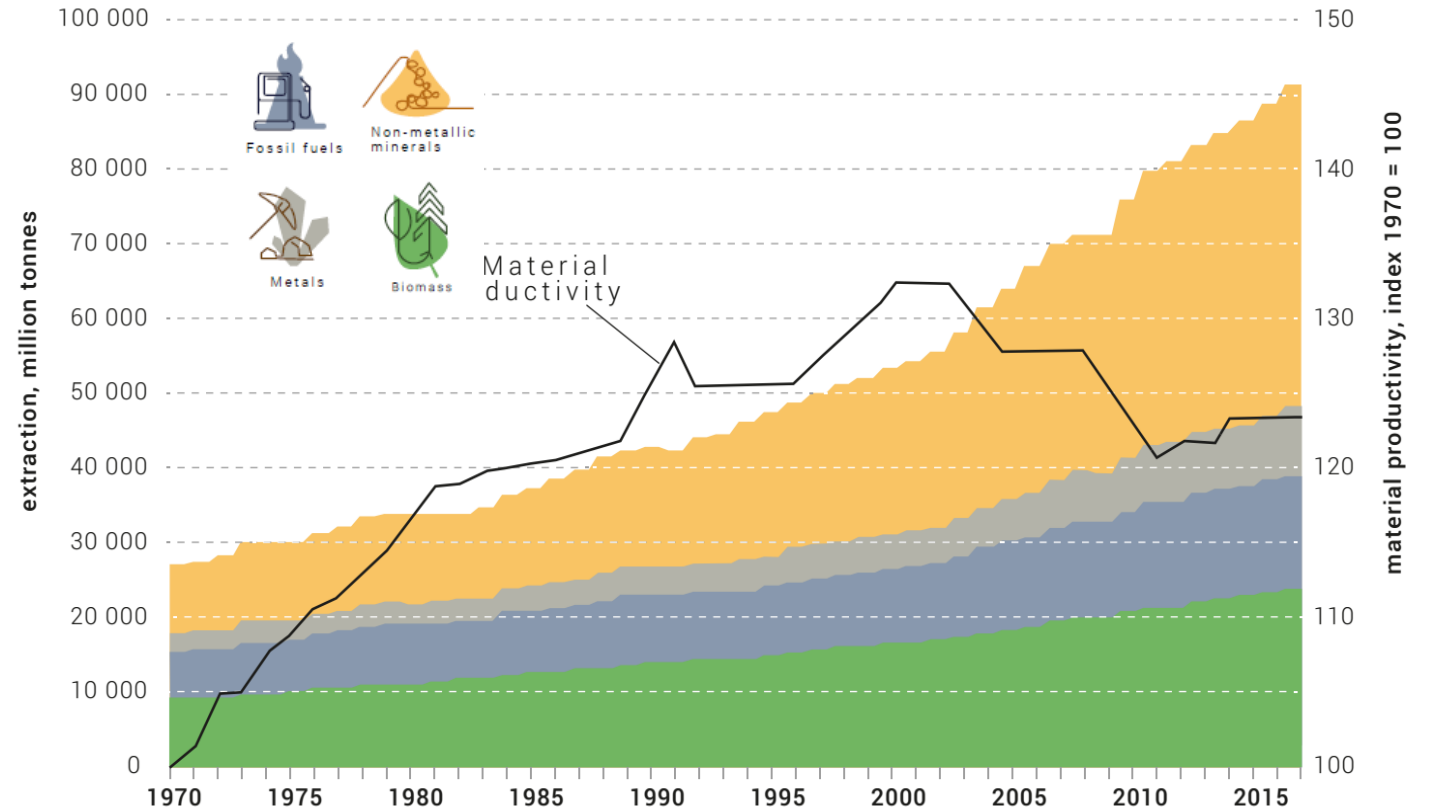
The **USE** of natural resources has more than **tripled** from 1970, and **continues to grow**



92 billion tons of global extraction



12.2 tons materials demand per capita



Myth: Technological advancement is making the global economy more resource efficient.

Fact: Some (high-income) countries are becoming much more efficient but **global productivity has not improved** in the last 20 years

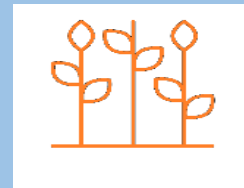
Historical and current patterns of natural resource use are resulting in increasingly negative impacts on the environment and human health



50% of global climate change impacts

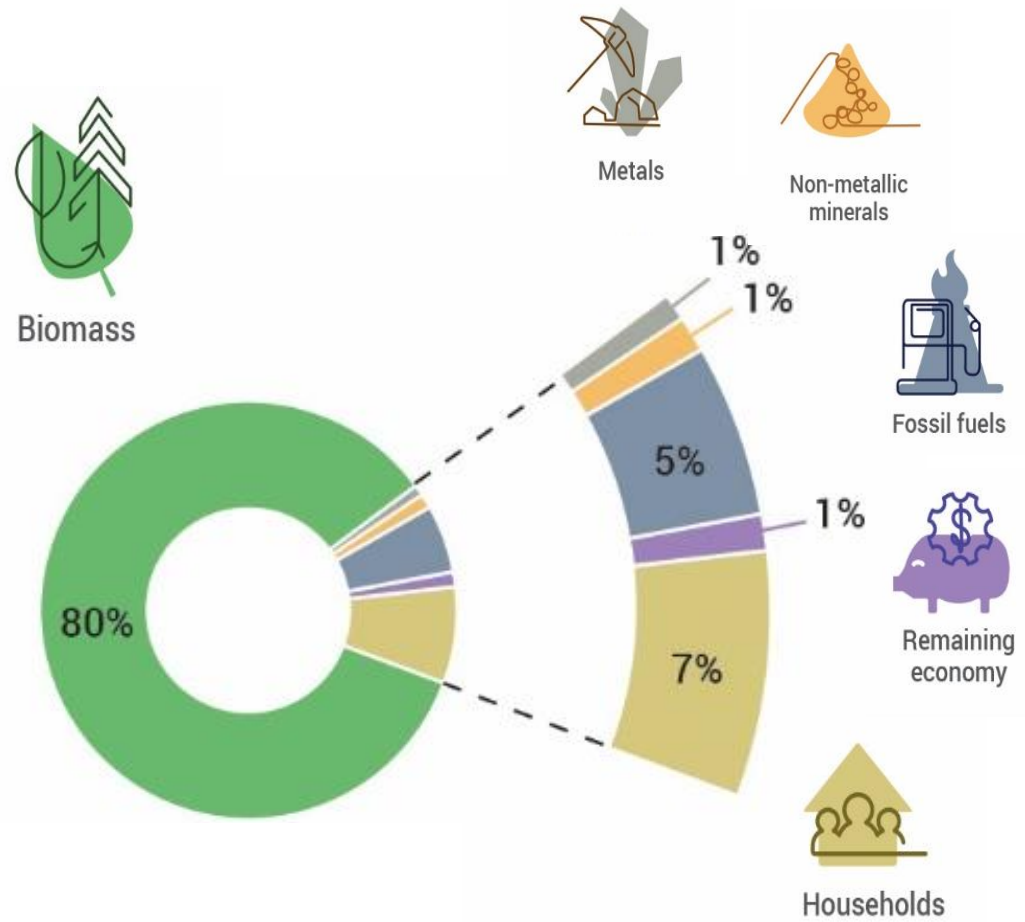


90% of global biodiversity loss and water stress



11% of global species loss

Land Use Related Biodiversity Loss



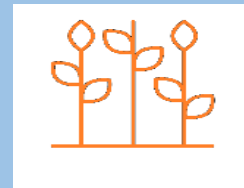
Historical and current patterns of natural resource use are resulting in increasingly negative impacts on the environment and human health



50% of global climate change impacts

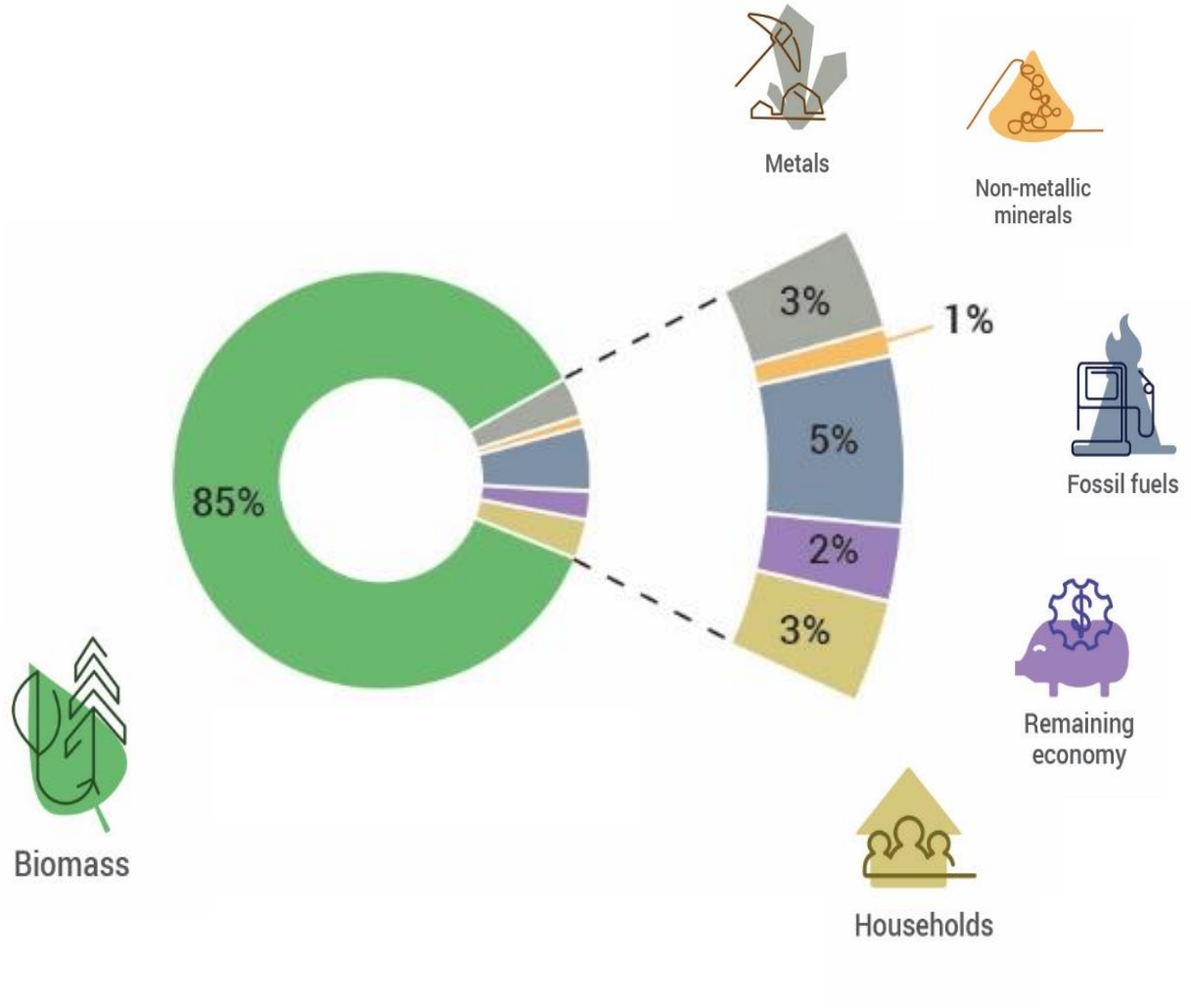


90% of global biodiversity loss and water stress



11% of global species loss

Water Stress Impacts



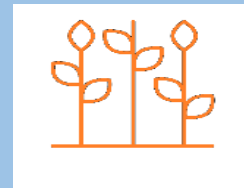
Historical and current patterns of natural resource use are resulting in increasingly negative impacts on the environment and human health



50% of global climate change impacts

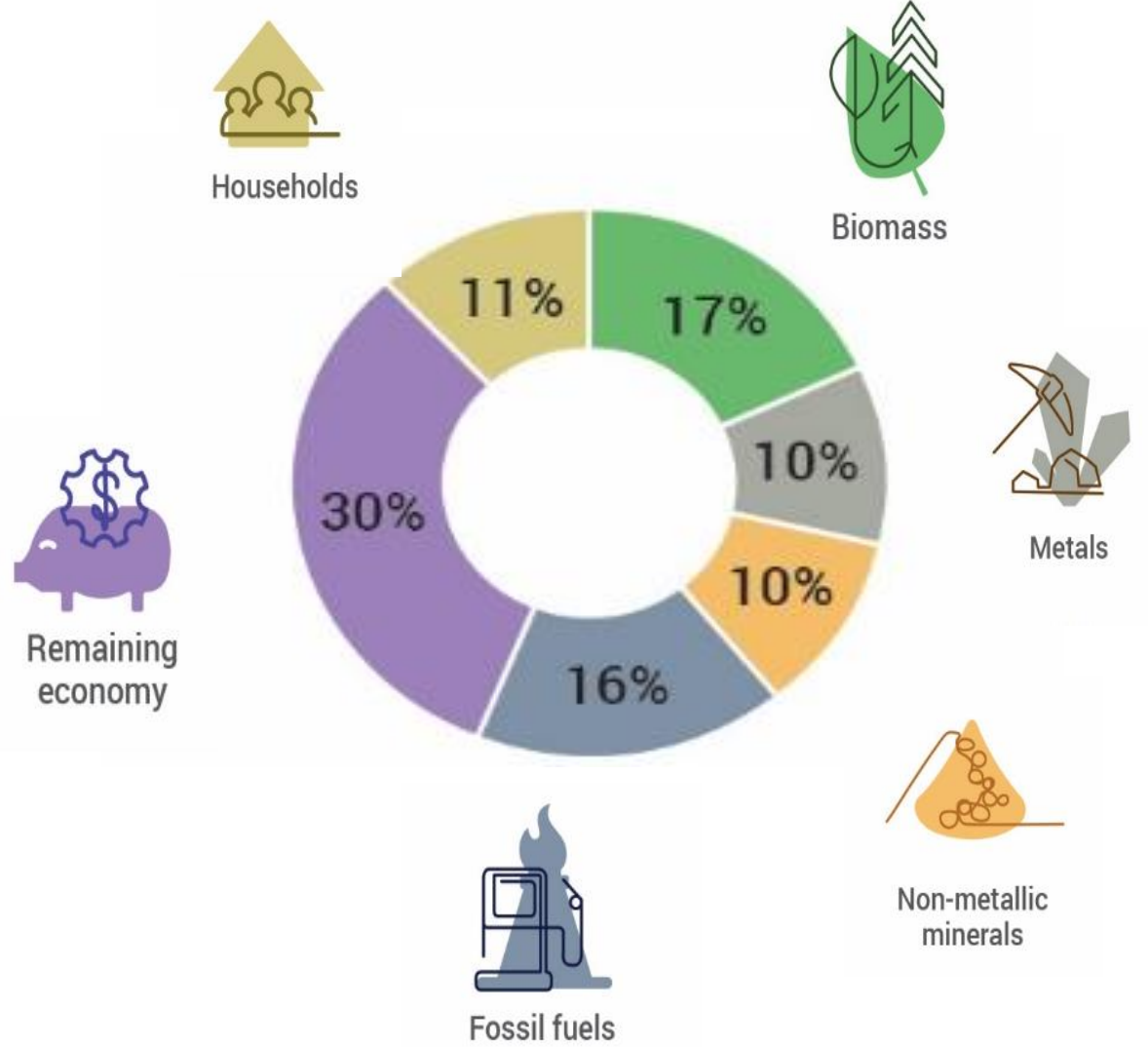


90% of global biodiversity loss and water stress



11% of global species loss

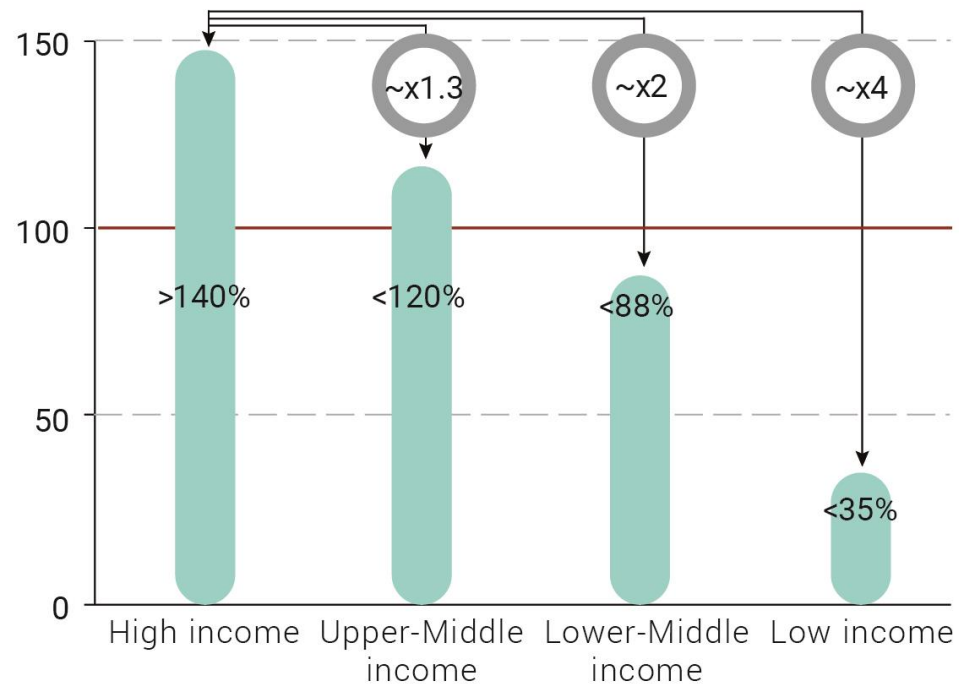
Climate change impacts



Unequal impacts: Impacts of material consumption are 3 to 6 times greater in high-income countries than in low-income countries

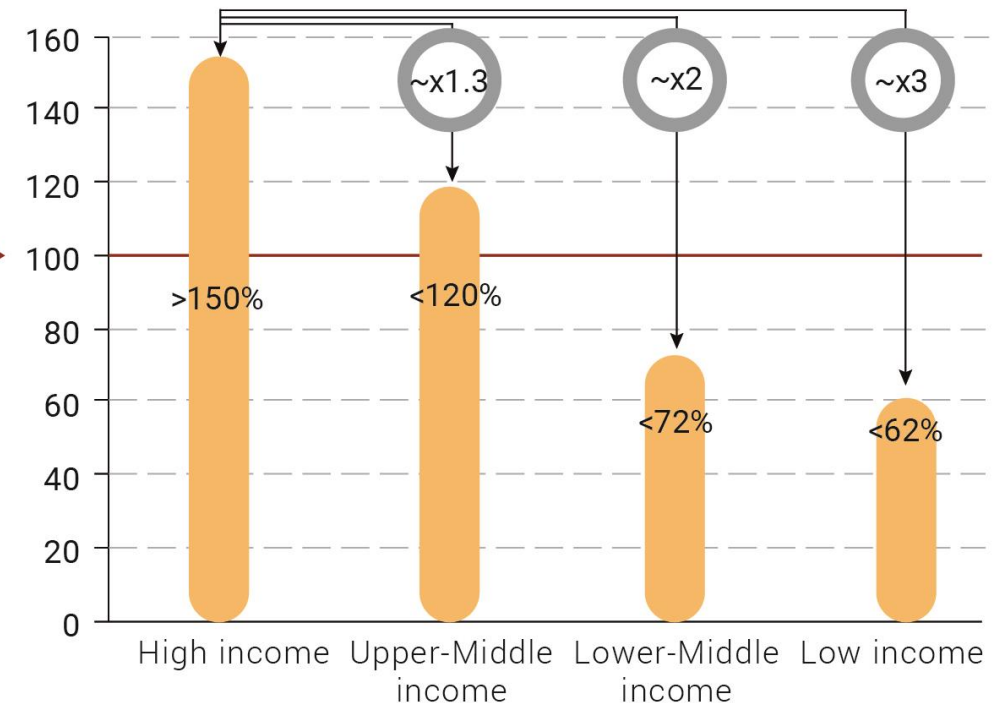
C. Water stress impact footprints of different income-level country groups in comparison

per capita water stress impact footprint
Relative to the global per-capita average



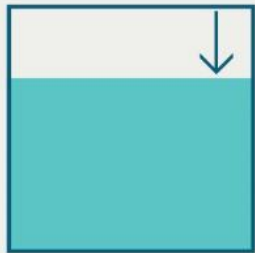
D. Land use related biodiversity loss footprints of different income-level country groups in comparison

per capita land use rel. biodiversity loss footprint
Relative to the global per-capita average



- In accordance with the material footprints, **high-income countries outsource large shares of the production related impacts** to middle- and low-income regions through trade.

Forests and Other habitat



**HISTORICAL
TRENDS**

Forests
reduced by over
10%

Other habitat
reduced by
~ 20 %



increases by
11%

**TOWARDS
SUSTAINABILITY**

13 million km²
of forest loss
prevented and
4.5 million km²
restored

**‘Towards
Sustainability’**

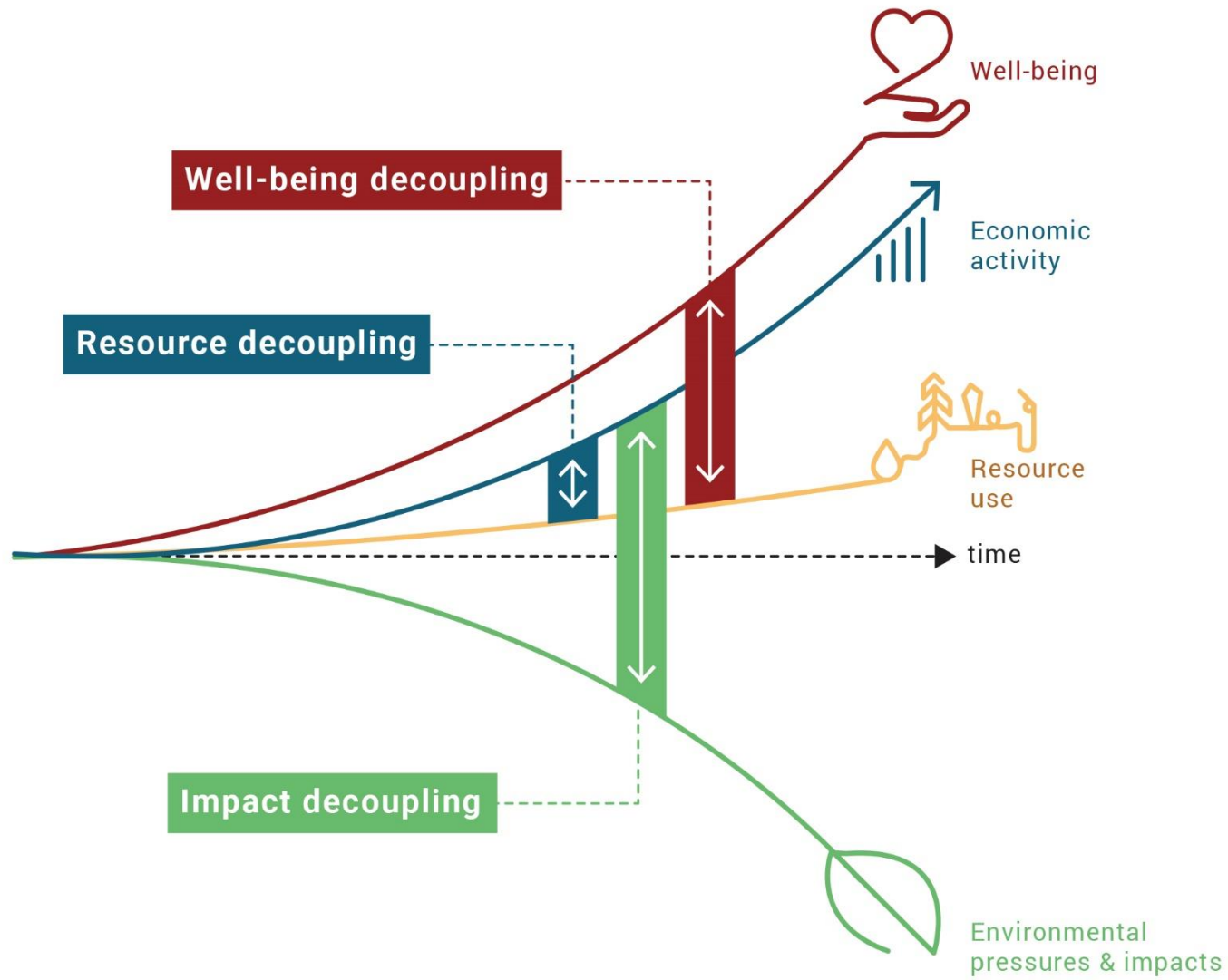
**Concerted
Measures**

can

**increase forests and
other habitats**

by **11%**

by **2060**



The **decoupling** of natural resource use and environmental impacts from economic activity and human well-being is an **essential** element in the transition to a **sustainable future**.