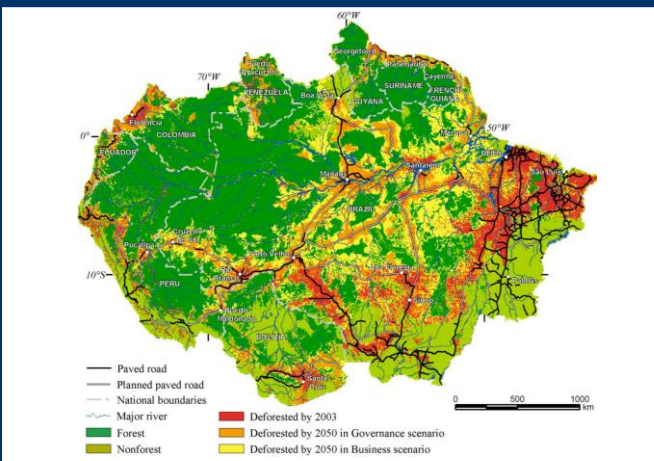
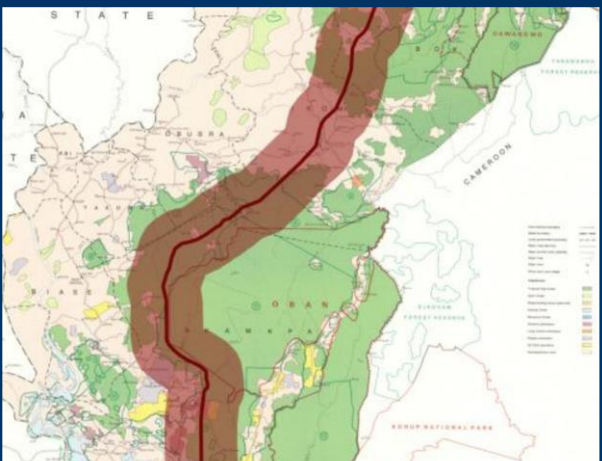
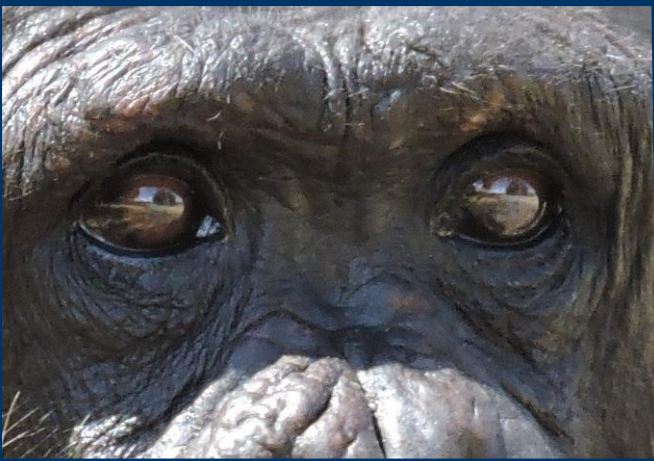
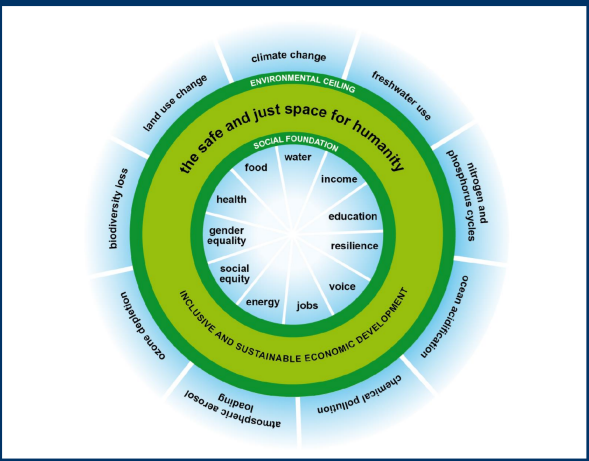
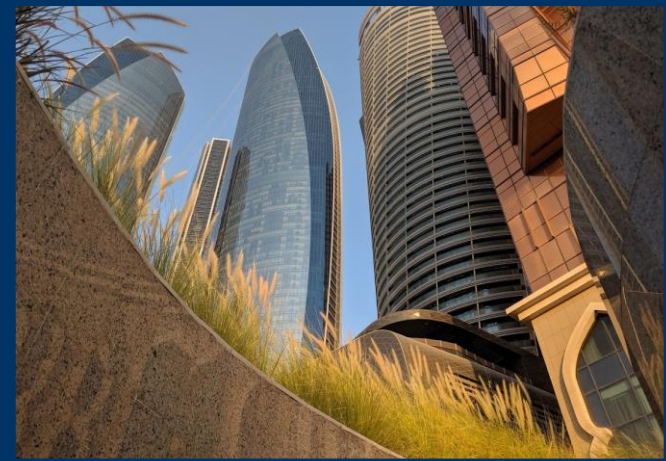


Essential Capacities for a Planetary Crisis @JamisonErvin



Empowered lives.
Resilient nations.



Wait – who’s driving this bus and why aren’t they applying the brakes?

“No need to panic! We have plenty of time!”

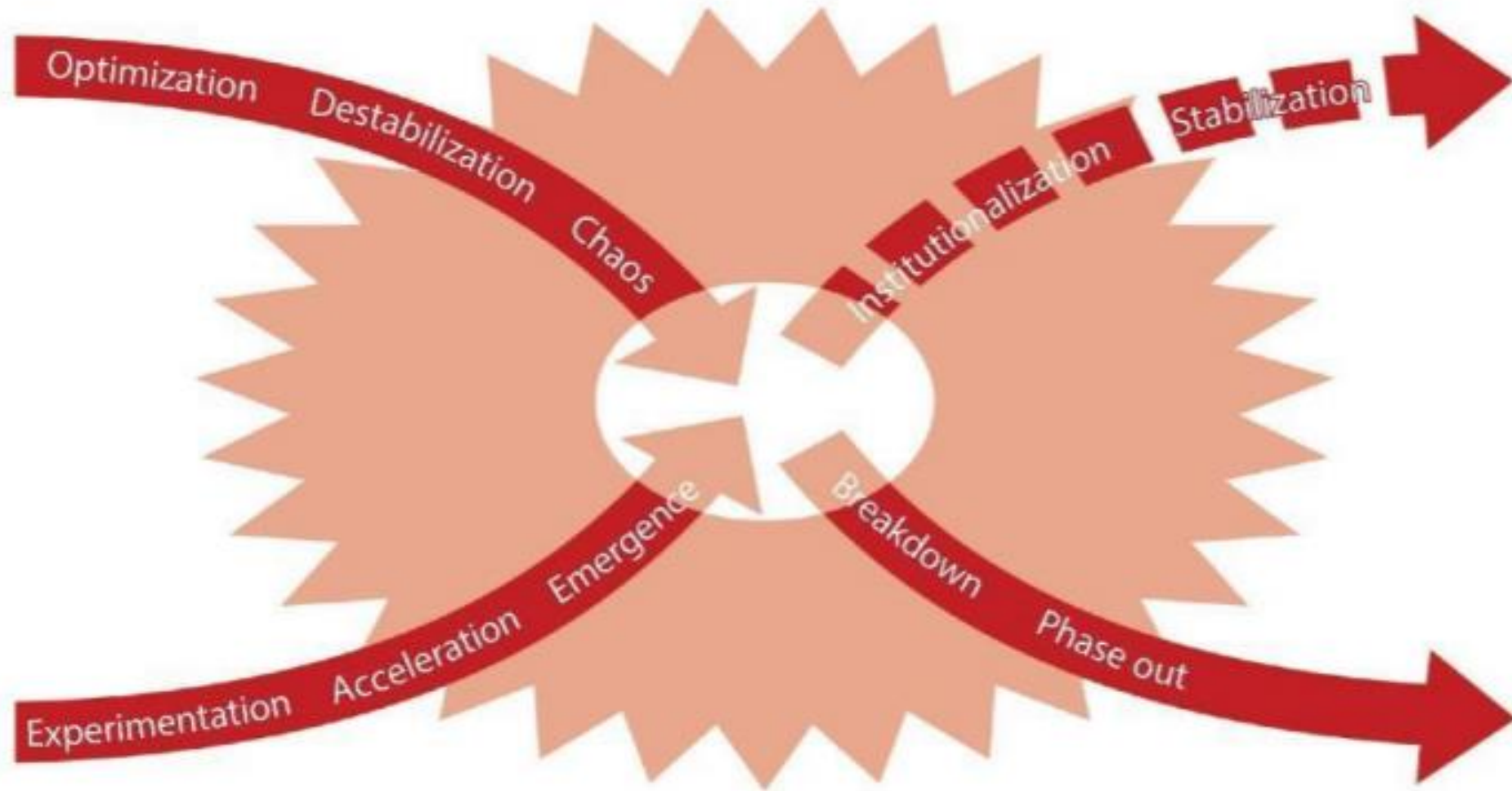


Capacity for a Planetary Crisis

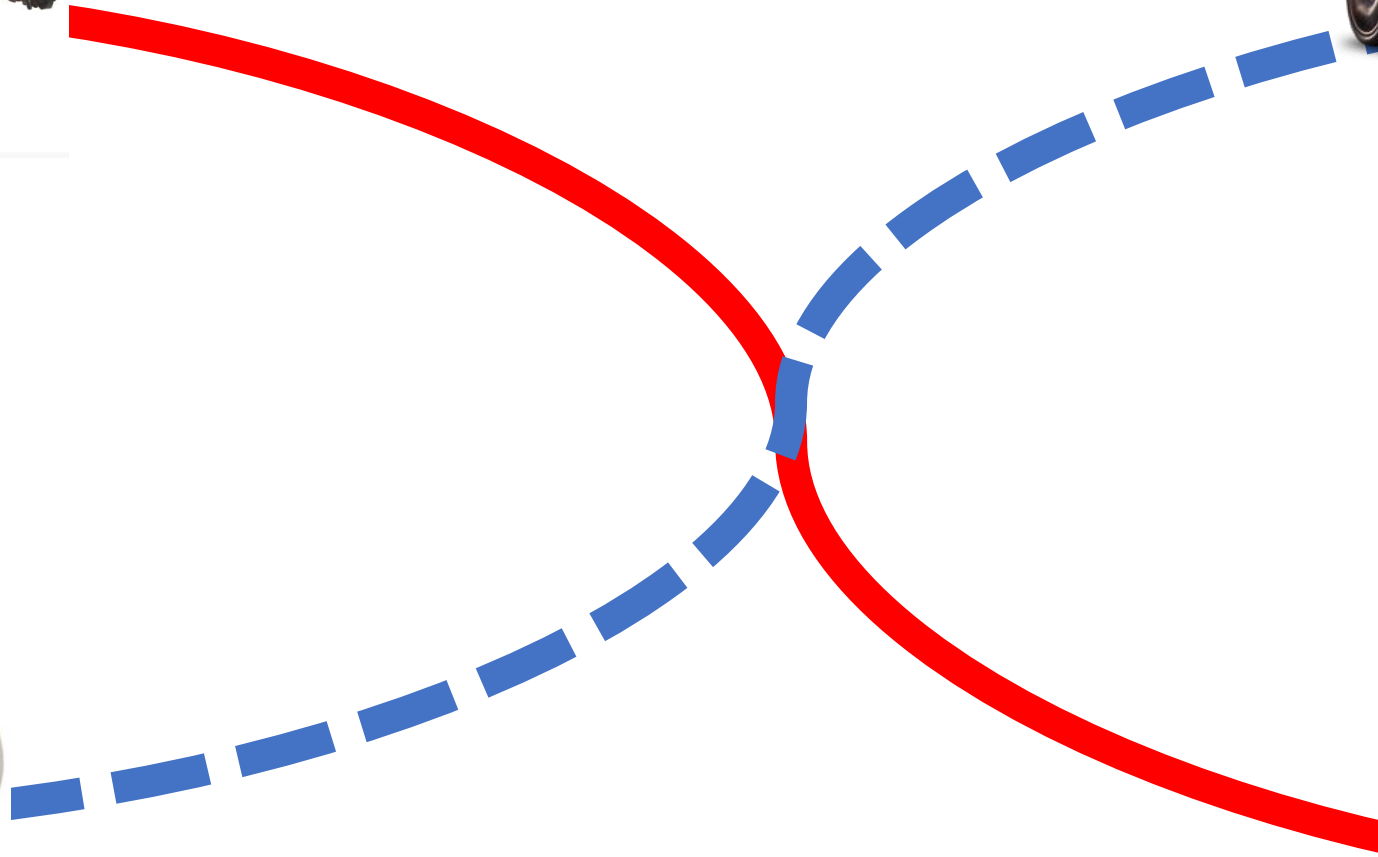
- How to use the **brakes**
- How to **bend** the curve
- How to **brace** for impact



The nature of system change



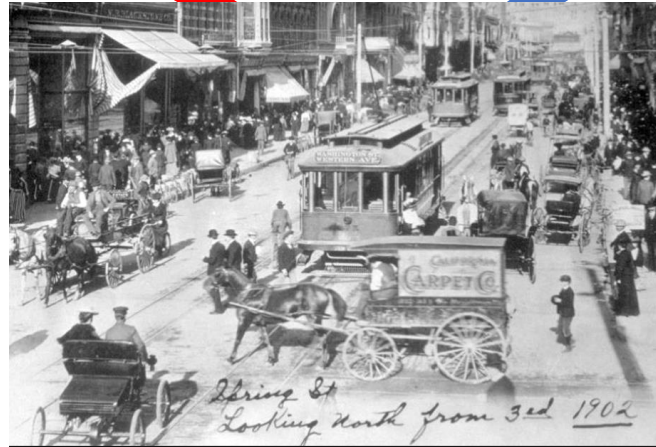
The nature of system change



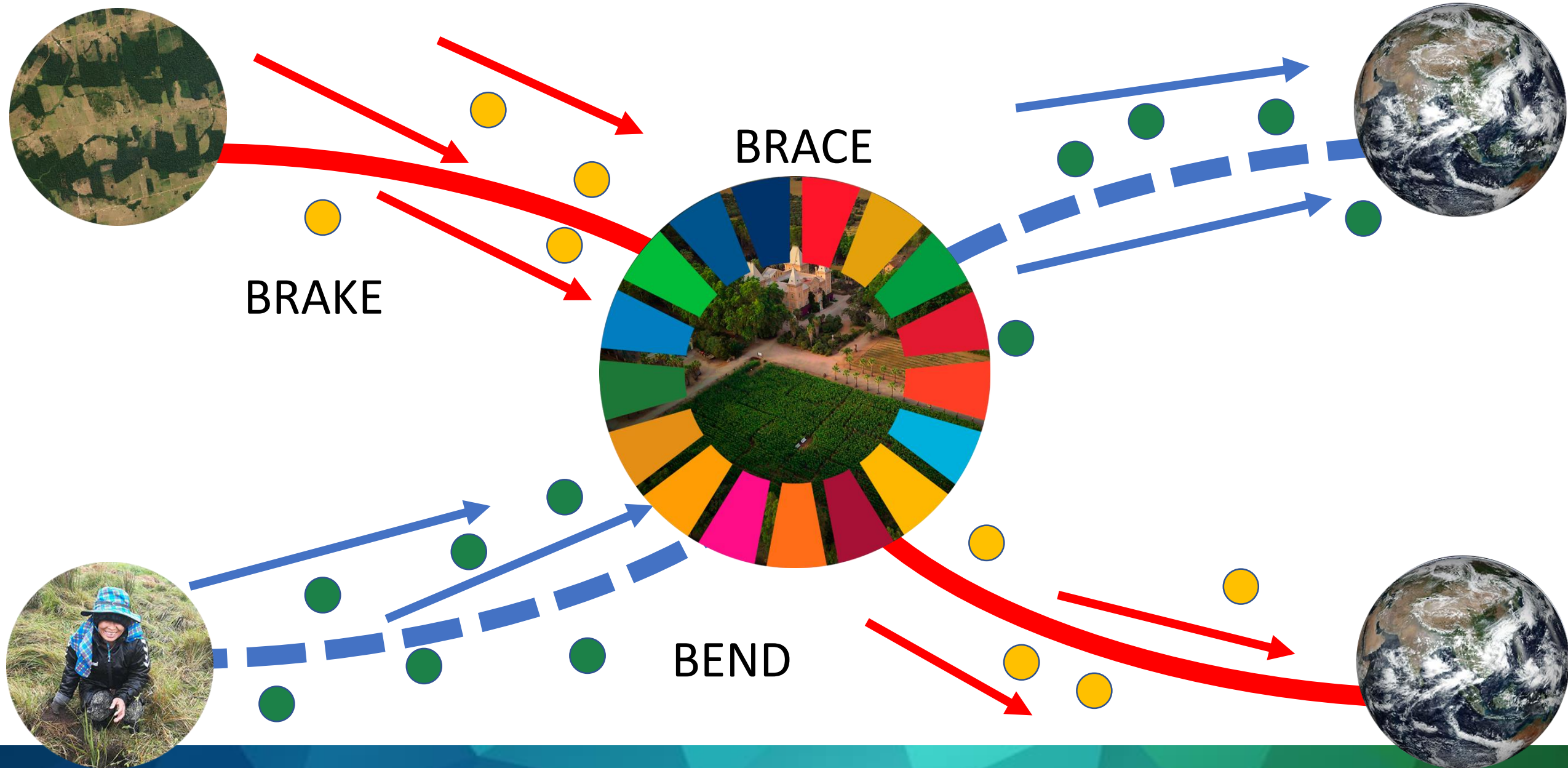


Spring St
Looking North from 3rd 1902

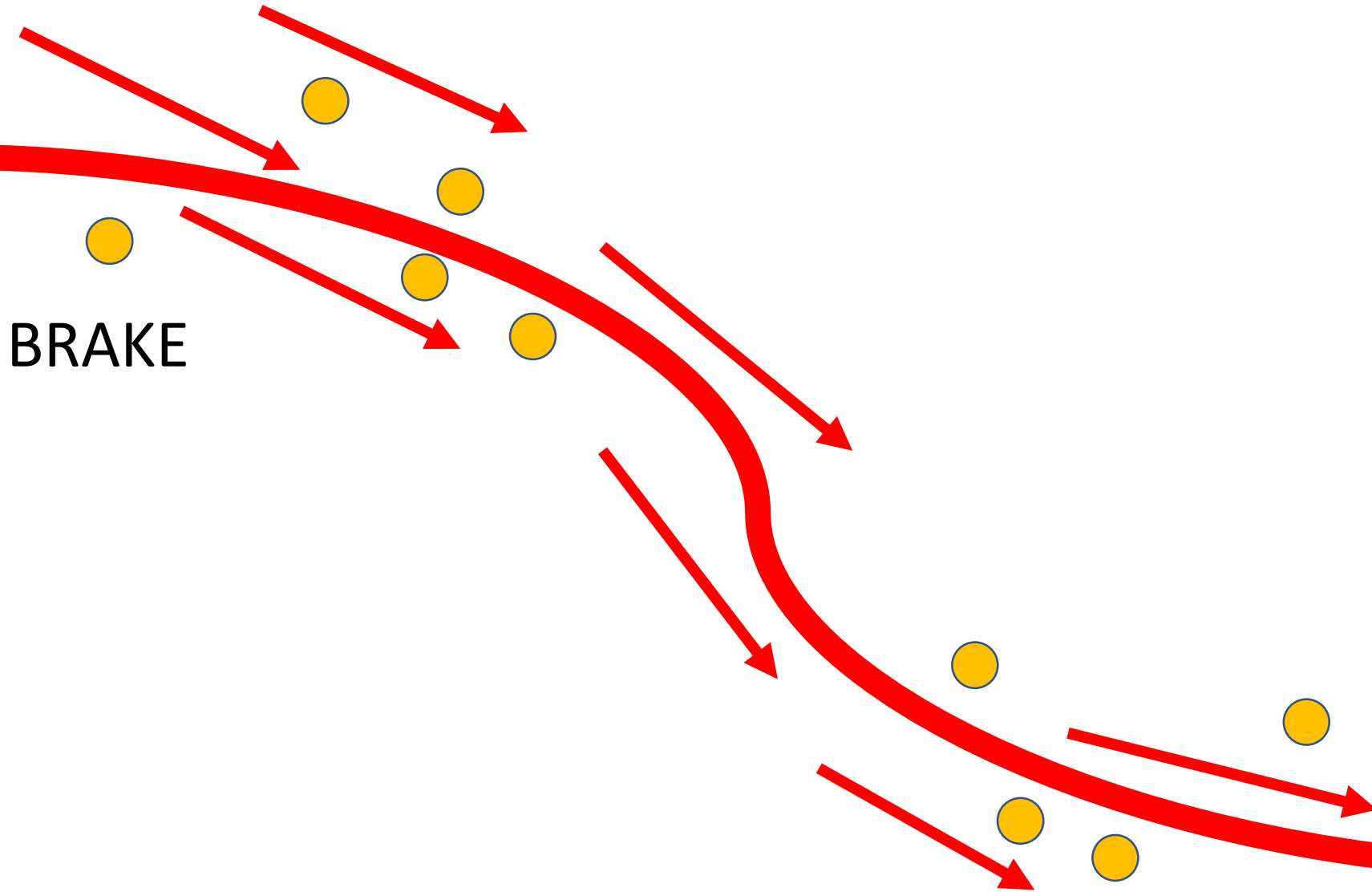
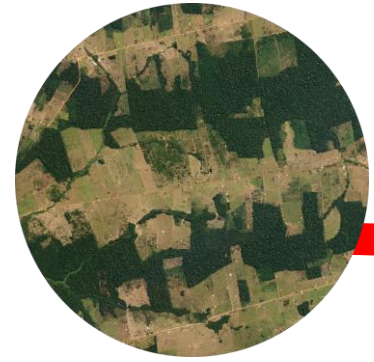
The nature of system change



System Change for Planetary Crisis



Capacities to Brake



BRAKE



1. Capacity to Move the Mammoth

Is that a mammoth?

Don't be silly!



1. Capacity to Move the Mammoth



Complicity in illegal
wildlife trade



Corrupt legal
systems, land grabs



Police abuses and
intimidation



Corporate bad
behavior

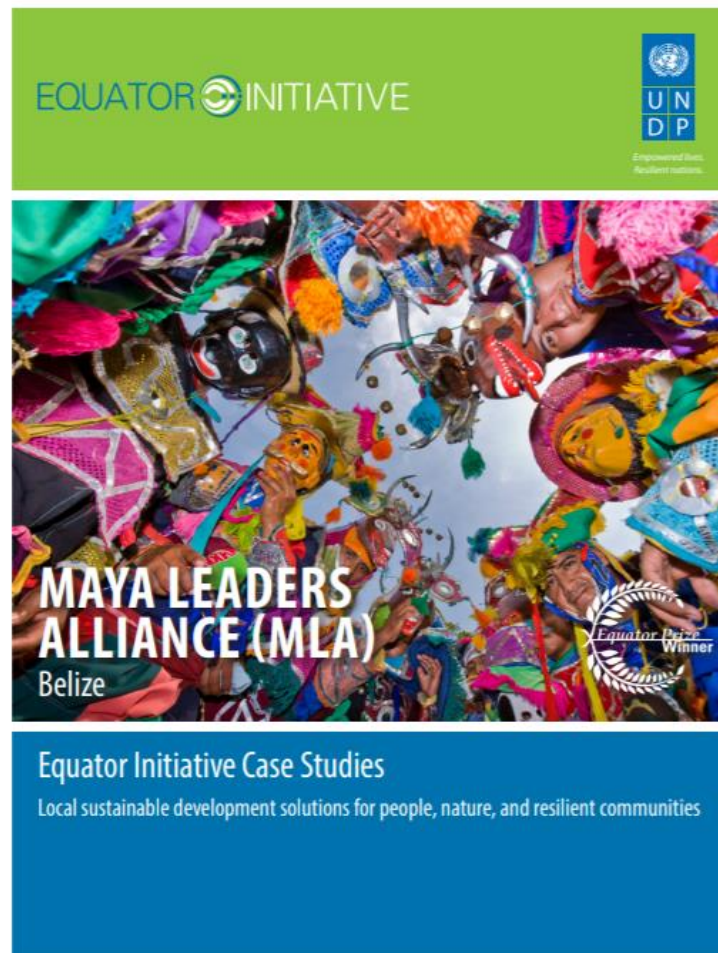


Special interests
and bribery



Journalist and
protestor killings

1. Capacity to Move the Mammoth



www.equatorinitiative.org

2. Capacity to Use Technology

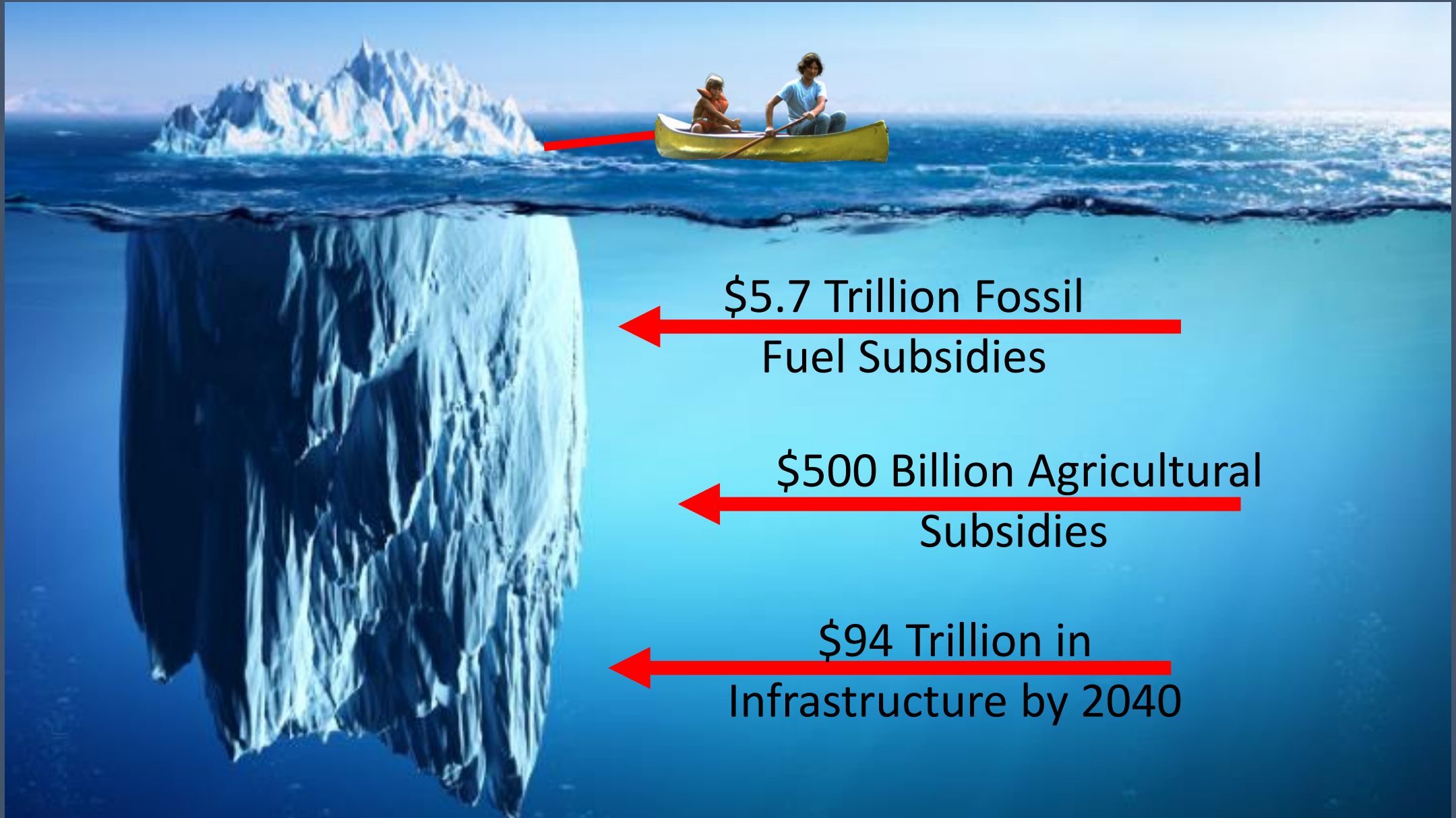


- To empower the powerless
- To increase transparency
- To mobilize action
- To hold actors accountable



Comunidades Nativas de Nuevo Saposoa y Patria Nueva de Mediación Callería - **Peru**

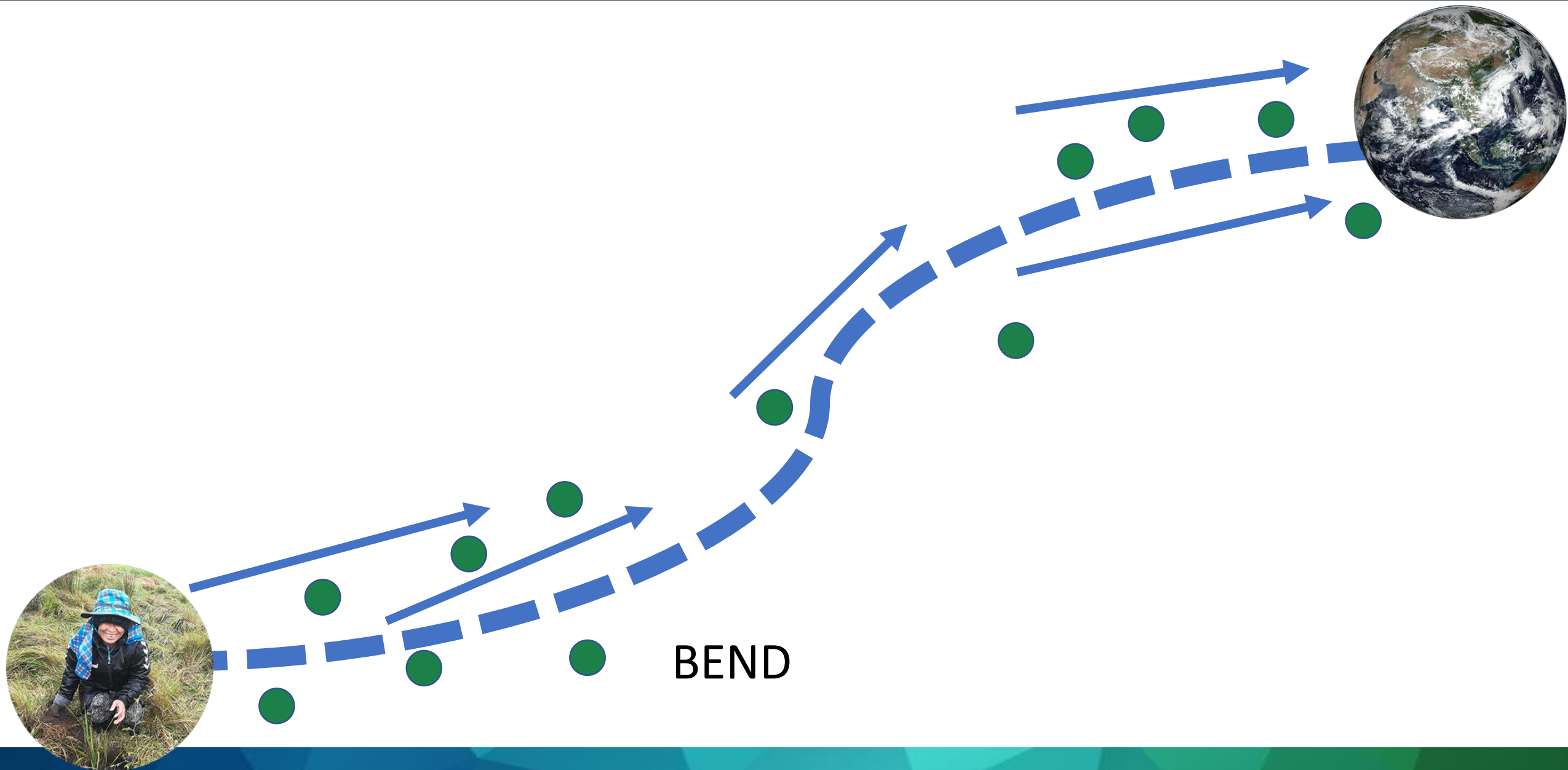
3. Capacity to Tackle the Tide, Not Just the Tip



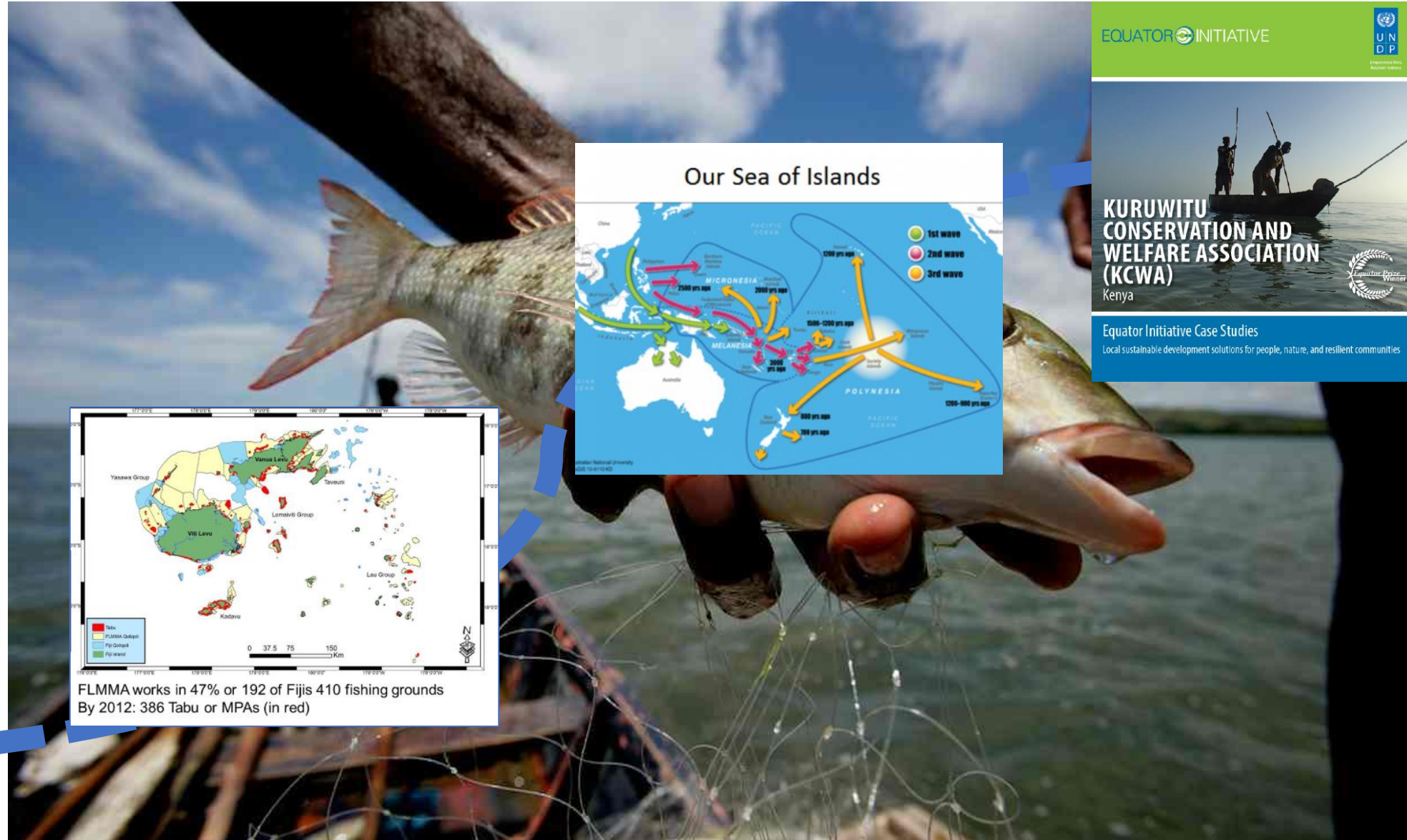
3. Capacity to Tackle the Tide, Not Just the Tip



Capacities to Bend the Curve



4. Capacity to Replicate



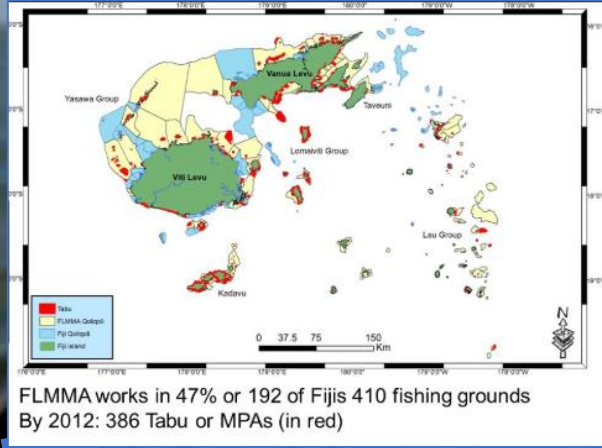
EQUATOR INITIATIVE 





KURUWITU CONSERVATION AND WELFARE ASSOCIATION (KCWA)
Kenya




Equator Initiative Case Studies
Local sustainable development solutions for people, nature, and resilient communities



EQUATOR INITIATIVE 

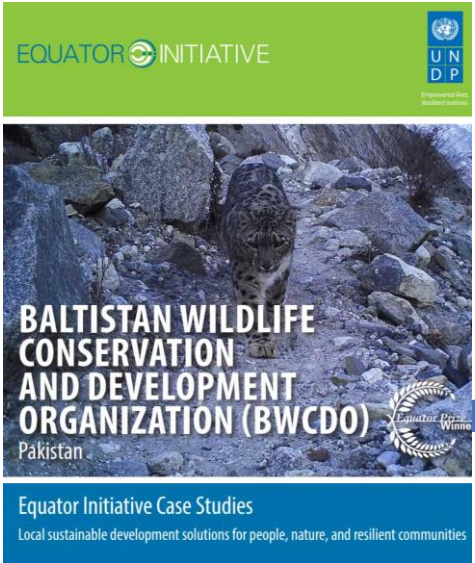
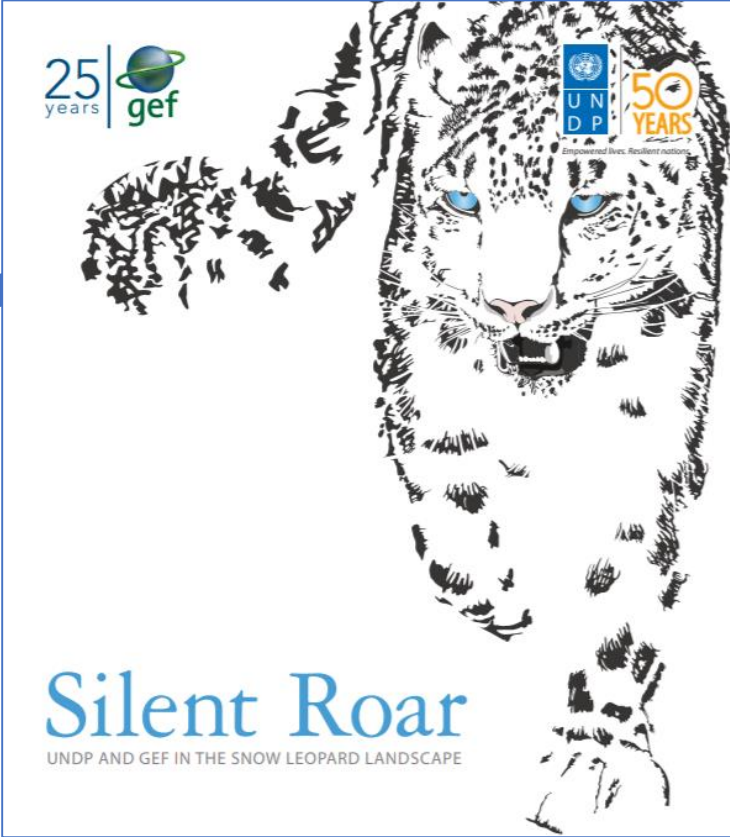
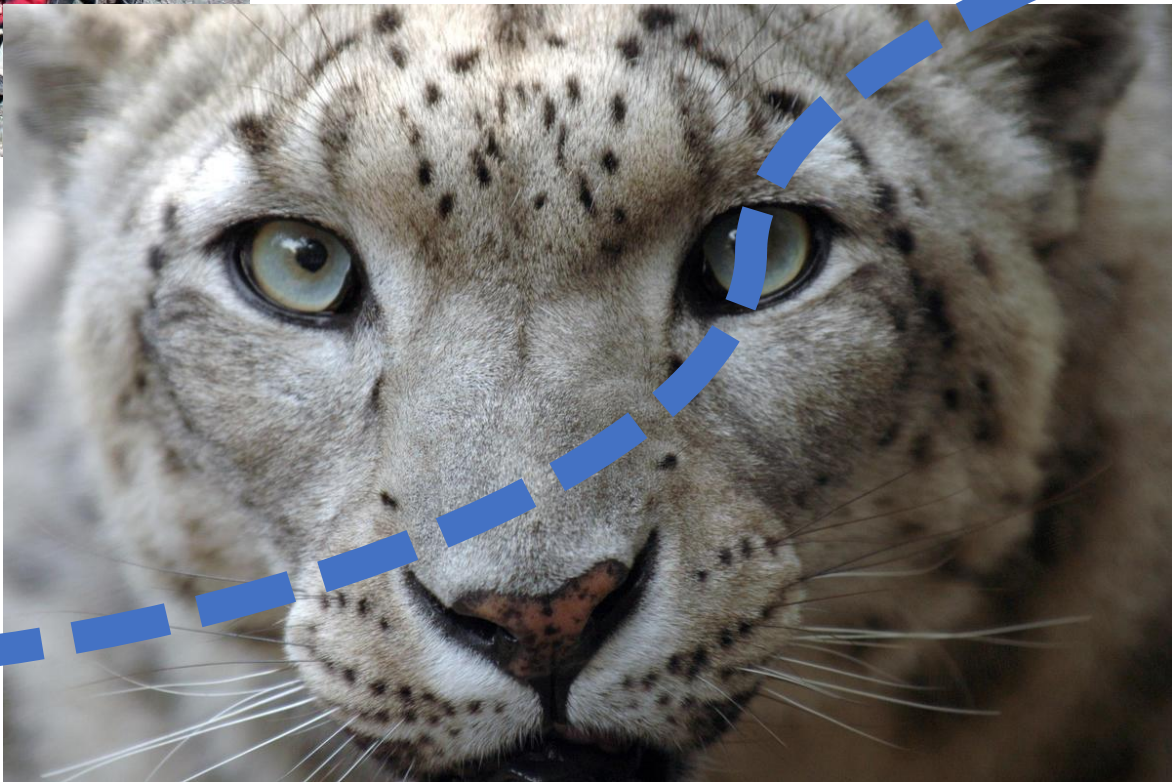


FIJI LOCALLY-MANAGED MARINE AREA NETWORK
Fiji



Equator Initiative Case Studies
Local sustainable development solutions for people, nature, and resilient communities

5. Capacity to Expand and Scale Up



6. Capacity to Transform Supply Chains



Dutjahn Sandalwood Oils Pty Ltd -
Australia



Federación Tribus Pech de Honduras
(FETRIPH) - **Honduras**

7. Capacity to Tell A Good Story

EQUATOR INITIATIVE

UNDP
Programme of Work
2014-2017



KELOMPOK
PEDULI
LINGKUNGAN
BELITUNG
Indonesia

Equator Prize
Winner

Studi Kasus Equator Initiative

Sebuah solusi pembangunan berkelanjutan di tingkat lokal demi masyarakat yang tangguh dan alam yang lestari



8. Capacity to Make Some Noise



9. Capacity to Unleash Private Sector Capital

There are more than \$285 trillion
in assets under management

Just 1% invested in SDGs would
fully finance the gap





I don't get out of bed for under \$100 million – **bring me a deal!**

A \$2 million mini-solar grid would allow our whole village to farm sustainably - **bring us a deal!**



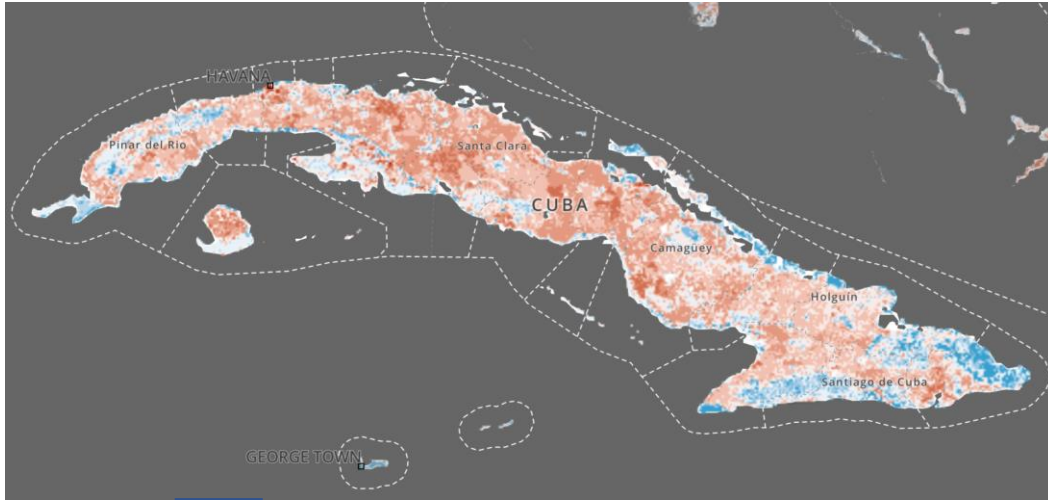
Capacity to Brace for Impact

BRACE

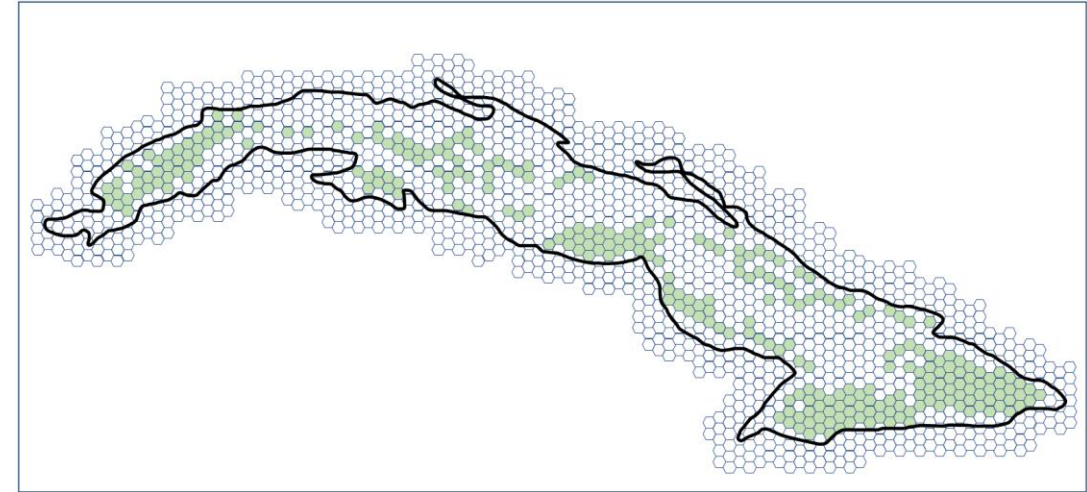


10. Capacity to Create a Planetary Safety Net

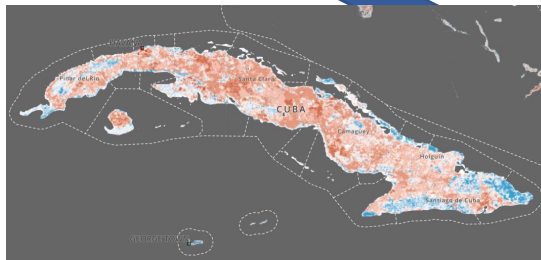
From data layers



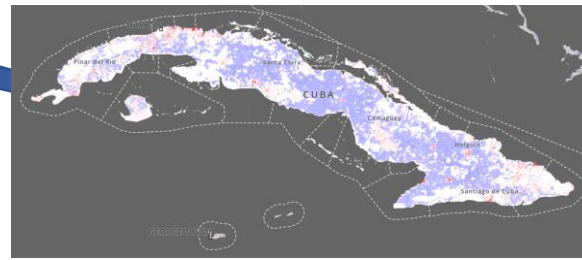
To composite layers



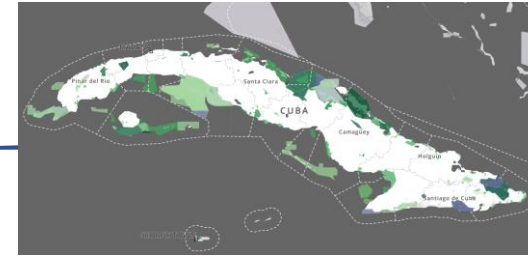
To multiple data layers



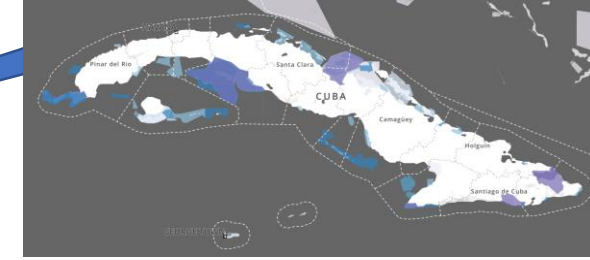
Intactness



Human footprint



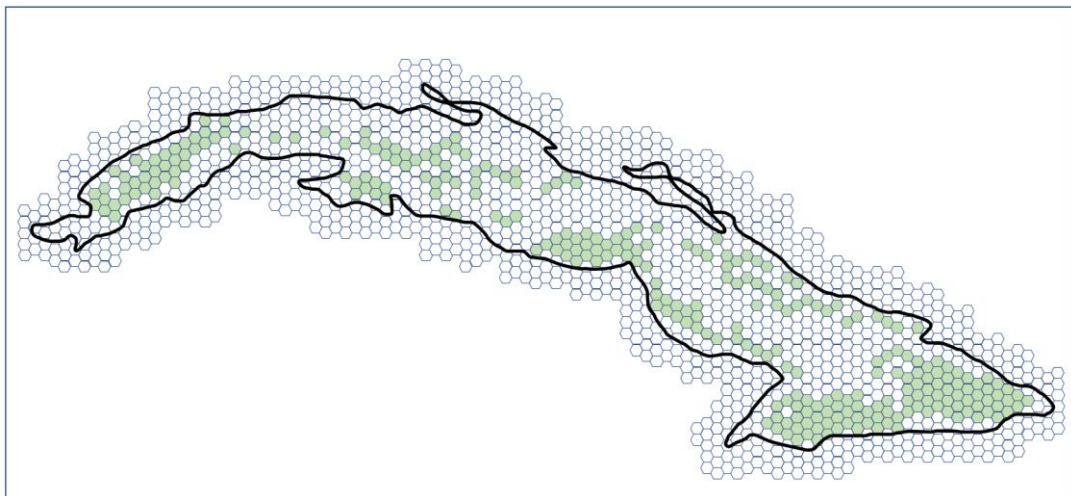
Protected areas



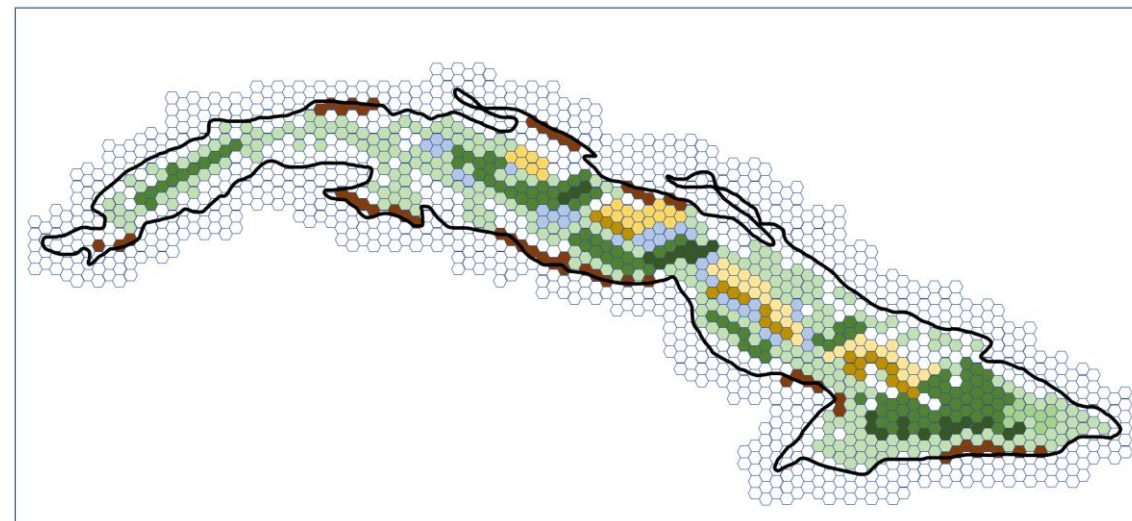
Marine PAs

10. Capacity to Create a Planetary Safety Net

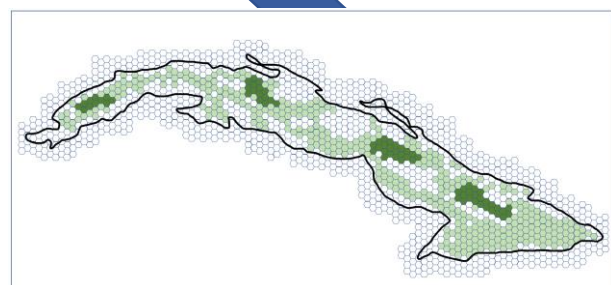
From composite layers



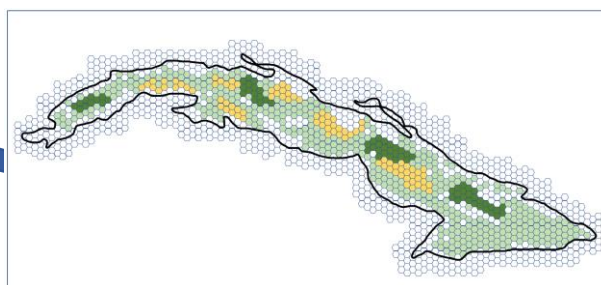
To planetary safety net maps



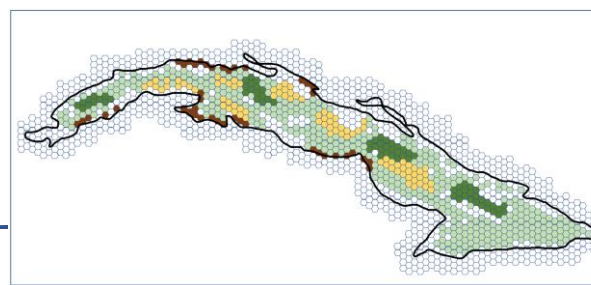
To multiple composite layers



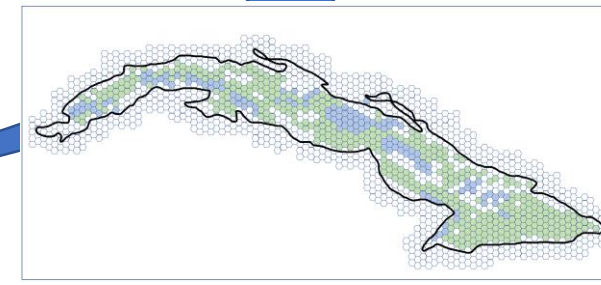
Water security



Food security



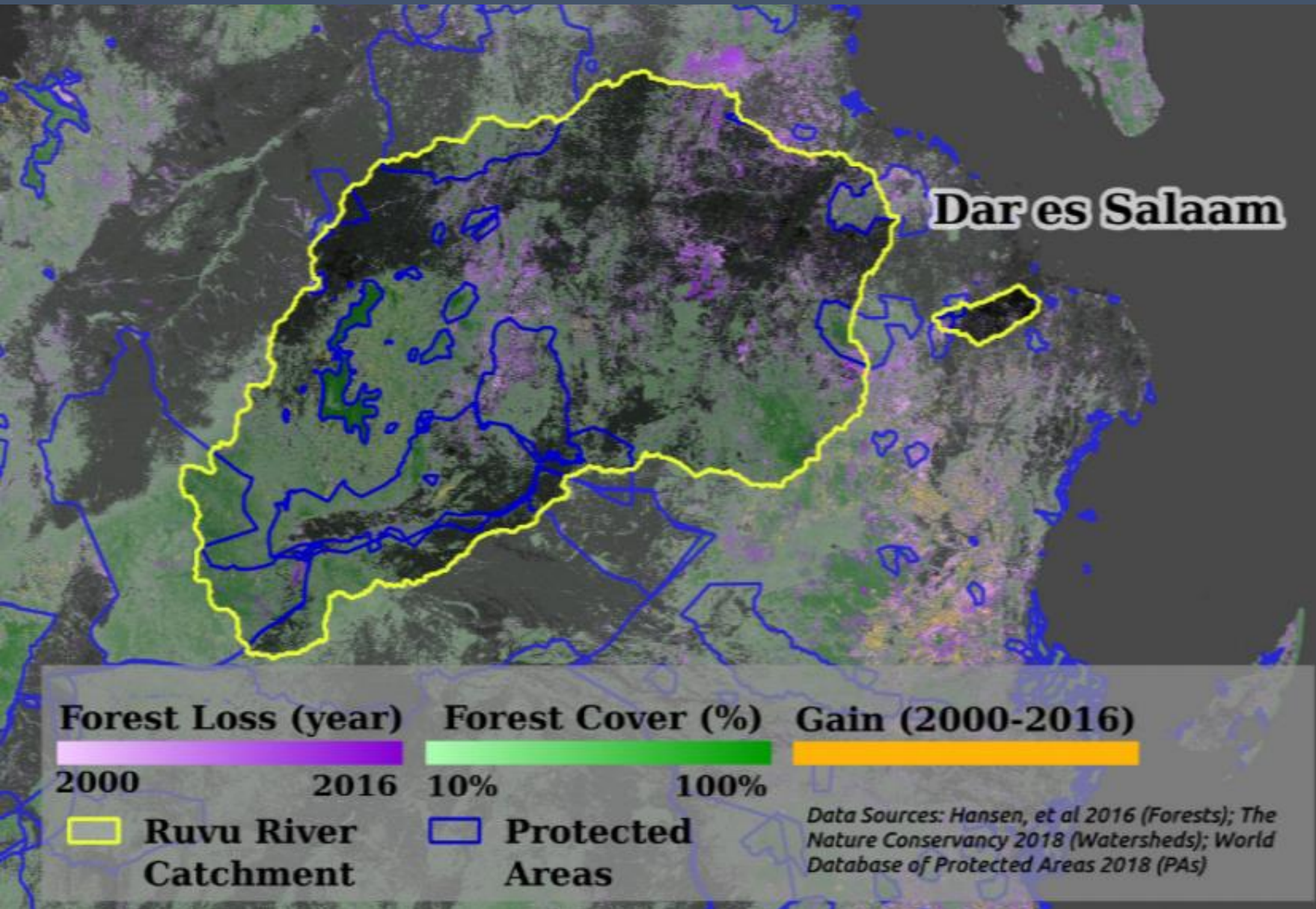
Disaster prevention



Carbon sequestration



10. Capacity to Create a Planetary Safety Net



- Forest cover loss data
- Protected area data
- Water source for Dar es Salaam

=

WATER SECURITY

UN Biodiversity Lab

www.unbiodiversitylab.org

11. Capacity to Buffer the Most Vulnerable



3.2 billion people depend on nature for their livelihoods

11. Capacity to Buffer the Most Vulnerable



Protect essential ecosystems for vulnerable

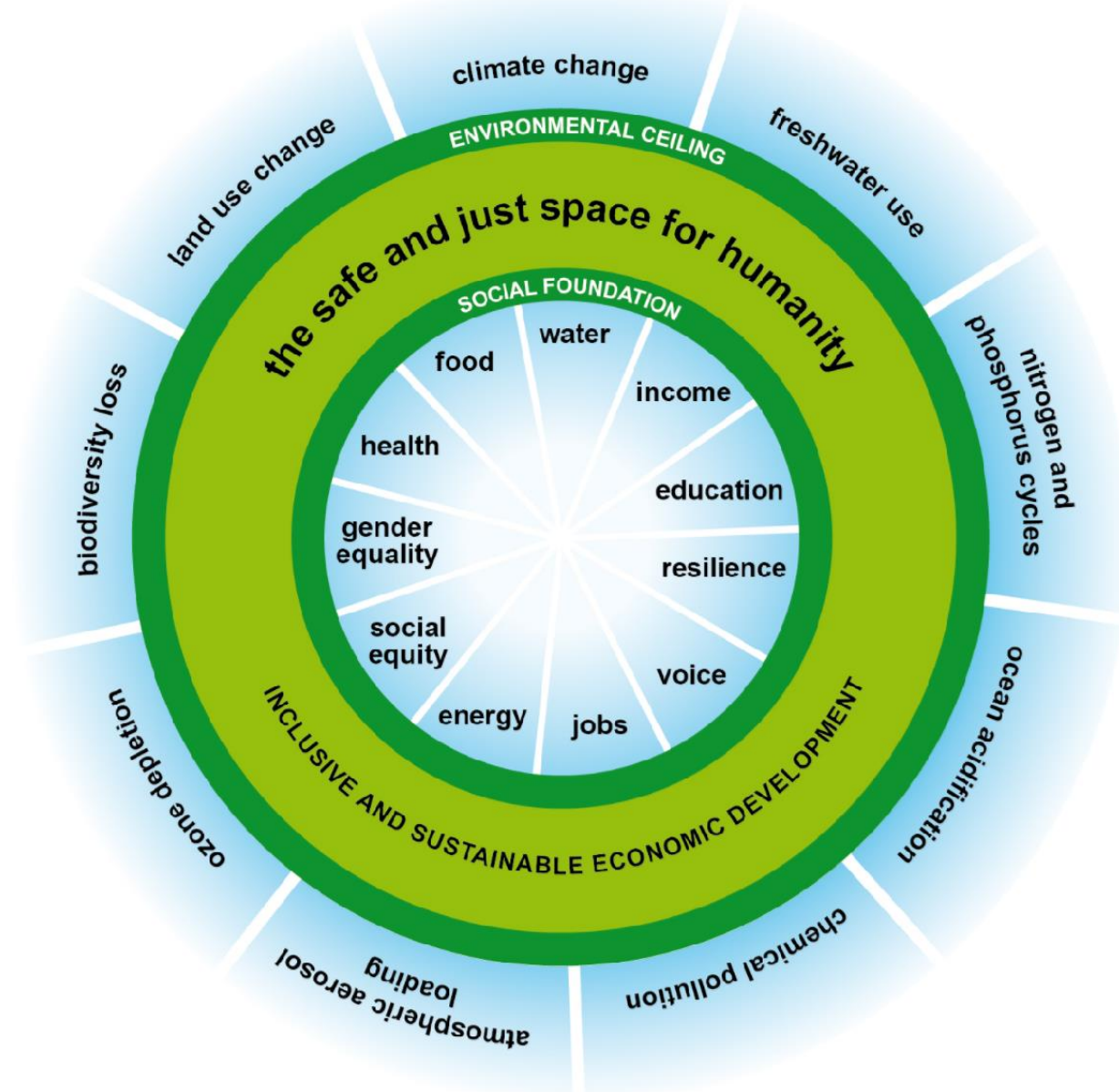


Fast-track ecosystem **restoration**



Manage natural resources for vulnerable

11. Capacity to Buffer the Most Vulnerable



Curriculum for a Planetary Crisis

WORLD ECONOMIC FORUM
COMMITTED TO IMPROVING THE STATE OF THE WORLD

Global Challenge Insight Report

The Future of Jobs

Employment, Skills and Workforce Strategy for the Fourth Industrial Revolution

January 2016



**12. Courage and skill
to drive the bus**

